



COM ORDERING GUIDELINES
INNOVATIONS IN SHADING SYSTEMS

Tensioned Bottom-up Angled Roller Shades

Customer Supplied Motorized Shade Notes:

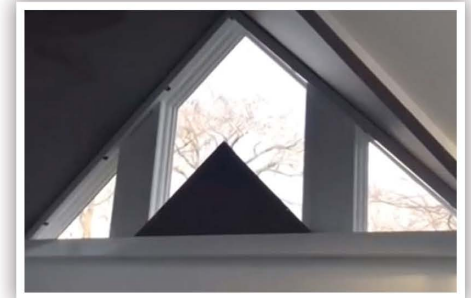
- Order your shade 12” taller than the finished height at the highest point.
- Order your shade the exact finished width desired (DEL does not cut the width).
- Order your shade with the motor on the opposite side as you would like it finished.
- Order your shade including any metal trim required for your project.

DEL does not supply pocket, fascia, side channel, etc.

- Order your shade on a 3” tube if your shade is over 96” wide.
- Exposed lift cables will be approximately 3” from each end.

Additional center cables are required every approximately 28”.

Contact Motorized Solutions for quantity and locations.



MOTOR OPTIONS:

A minimum of 6 Nm motor

Roller 150 for shades under 120” x 120”

Roller 300 for shades over 120” x 120”

APPROVED FABRICS:

Sheer: Basketweave 90, Basketweave 27,
E Screen, M Screen

Blackout: Premiere/Flocke

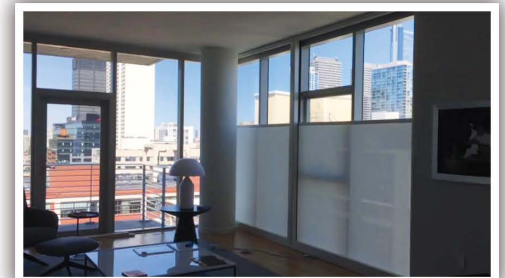
COM ORDERING GUIDELINES



Tensioned Bottom-up Straight Roller Shades

Customer Supplied Motorized Shade Notes:

- Order your shade with one of two hembar options:
 - Exposed Bottom Bar
 - Half -Wrap Architectural Bottom Bar
- Order your shade with the motor on the opposite side as you would like it finished.
- Order your shade the exact finished width desired (We do not cut the width).
- Order your shade including any metal trim required for your project.
 - Motorized Solutions does not supply pocket, fascia, side channel, etc.
- Exposed lift cables will be approximately 1" from each end. Center cables are required for shades over 76". Contact Motorized Solutions for quantity and locations.



MOTOR OPTIONS:

A minimum of 2 Nm motor
Roller 150 for shades under 120" x 120"
Roller 64 is available for small windows
Contact us for approval

APPROVED FABRICS:

Sheer: Basketweave 90, Basketweave 27,
E Screen, M Screen
Blackout: Avila/Avila Solid, Premiere/Flocke,
Value Premier, Standard (NLFG)
Contact us for approval of alternative fabrics

Tensioned Bottom-up Arched Roller Shades

Customer Supplied Motorized Shade Notes:

- Order your shade with the motor on the opposite side as you would like it finished.
- Order your shade as regular roll.
- Order your shade including custom 6" wide x 6" tall pocket without flap.

Note: Pocket size may increase depending on the shade size.



MOTOR OPTIONS:

Roller 64

Roller 100 may be needed for large shades

If using roller 100, pocket size will change.

Contact your salesperson for the exact size needed.

APPROVED FABRICS:

Sheer: Basketweave 90, Basketweave 27,
E Screen, M Screen

Blackout: Premiere/Flocke

Contact us for approval of alternative fabrics

Arched Cellular/Honeycomb Shades

Customer Supplied Motorized Shade Notes:

- Order your shade 12" wider and 12" taller than your finished opening.
- Order your shade including a piece of 4" top back cover (*the cover is optional*)



MOTOR OPTIONS:
Triathlon Wired or Battery

APPROVED FABRICS:
All single cell fabrics

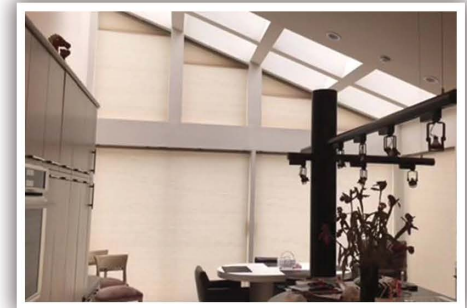
COM ORDERING GUIDELINES



Angled Honeycomb Shades

Customer Supplied Motorized Shade Notes:

- Order your shade 6" wider than the hypotenuse (angled) dimension.
- Order your shade 10" taller than the finished shade height.
- Order the shade from the manufacturer with metal headrail and bottom rail.



MOTOR OPTIONS:
Wired and Battery

APPROVED FABRICS:
All single cell fabrics

Skylight Honeycomb Shades

Customer Supplied Motorized Shade Notes:

- Spring rail standard color is white (black, bronze, and silver available upon request).
- Motorized Solutions can supply the spring rail in advance if you would like to powder coat or custom paint it.
- Side angles are used on the side of skylight systems to prevent the moving rail from sagging. Order two sill angles from the height of your finished shade.
- For inside mount honeycomb skylight shades, order your shade from the manufacturer 3/8" narrower than the opening and order the shade as inside mount.
- Order the shade from the manufacturer with metal headrail and bottom rail.



MOTOR OPTIONS:
Wired and Battery

APPROVED FABRICS:
All honeycomb fabrics

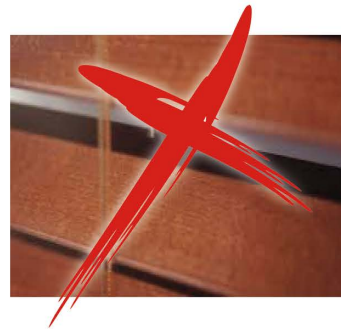
COM ORDERING GUIDELINES



Horizontal Blinds

Customer Supplied Motorized Shade Notes:

- Available as motorized tilt only and motorized lift and motorized tilt models.
Maximum sizes - Aluminum - 120" x 144",* Wood - 96" x 120"*
- The slats must have traditional route holes with lift cords centered on the slats.



*If decorative tape is used, the maximum blind height is reduced to 76"



Contact Motorized Solutions if you have sizes outside of the criteria described above.



MOTOR OPTIONS:
Wired and Battery

Innovations IN MOTORIZED SOLUTIONS



Motorized Solutions®
Toll Free: 866.446.6867
motorizedsolutions.com
info@motorizedsolutions.com